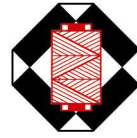


# SULKY®



## "BLOCK OF THE MONTH"

### APRIL



#### BOM 4

#### Christmas star and Christmas tree

#### Technique

Technique Sewing by Numbers on Tear Easy

#### Pattern

Segments for the Christmas star  
and stencils

Row 1, block 4

Finished block size: 12 x 12 inch

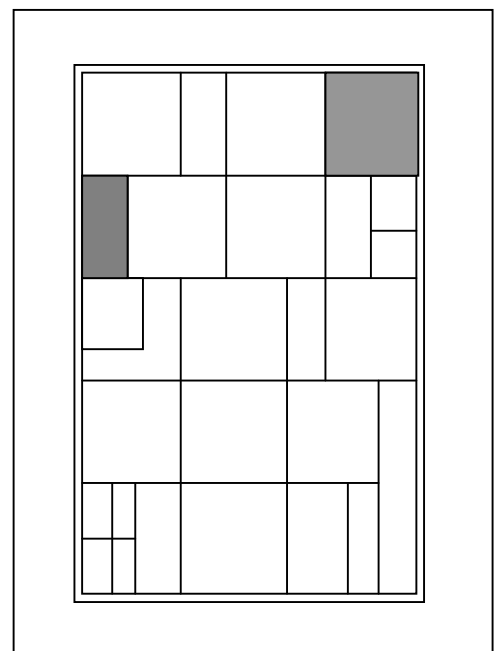
Block size with seam margin: 12 ½ x 12 ½ inch

Segments for the Christmas tree

Row 2, block 1

Finished block size: 6 x 12 inch

Block size with seam margin: 6 ½ x 12 ½ inch



## **Materials used**

Christmas star

Beige 6

Brown 1

Red 4

Green 10

Christmas tree

Beige 6 and 9

Brown 1 and 4

Green 7, 9, 11 and 12

## **Instructions**

Sewing the Christmas star

Patterns A and B are sewn by numbers on Tear Easy.

Pattern A is the outside square and pattern B is the middle square.

All other parts are cut as stencils and sewn.

### **1st Step**

Transfer pattern A 4 times and B once onto Tear Easy and cut out each segment individually, using the outlines.

### **2nd Step**

Sew the individual segments onto Tear Easy with a stitch length of 1.5". (See also BOM 3, sewing by numbers on Paper Solvy)

### **3rd Step**

Carefully remove Tear Easy from the reverse side.

### **4th Step**

Transfer the remaining cut parts onto the stencil and cut with a seam margin.

### **5th Step**

Join the segments and the stencil parts according to the pattern. Make sure that Y seams, where triangles are inserted, are only sewn to the corner point of the seam, making it easier to sew in the triangles.

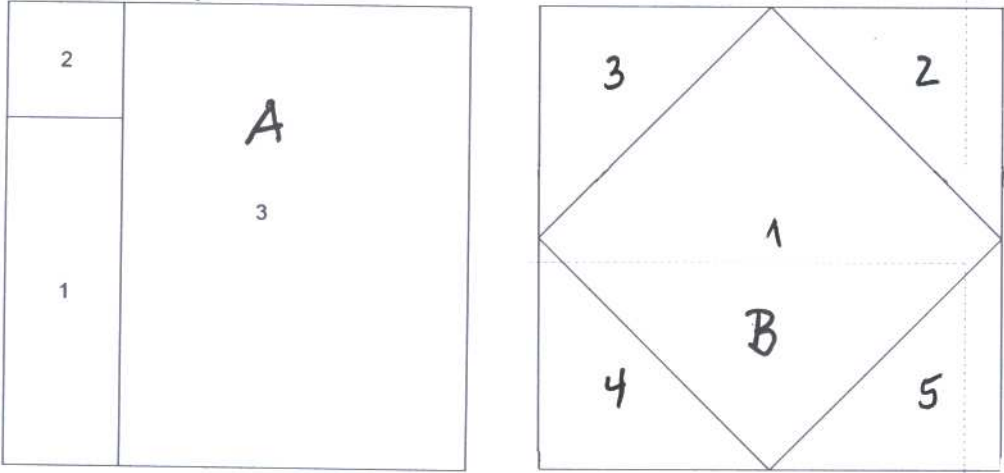
### **6th Step**

If necessary cut the finished block to the size given.

## **Christmas tree**

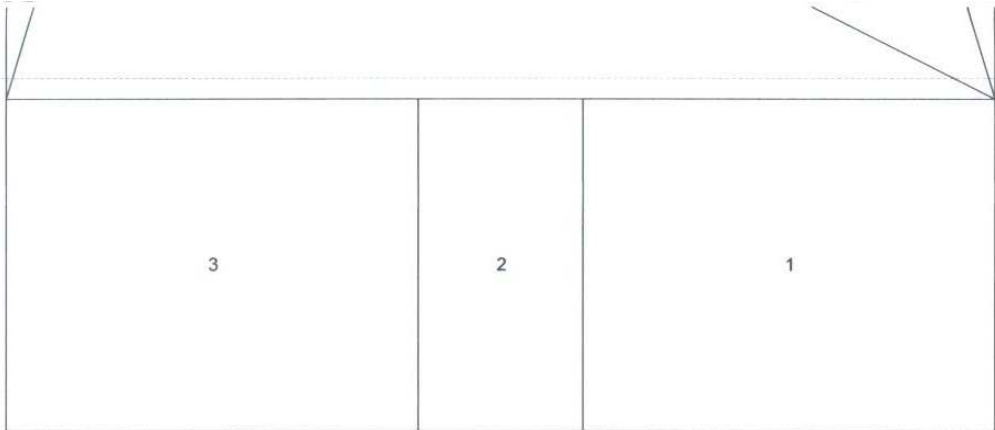
Stick both patterns for the Christmas tree on top of each other, transfer onto Tear Easy and finish using the "Sewing by Numbers" method.

**Christmas star I**

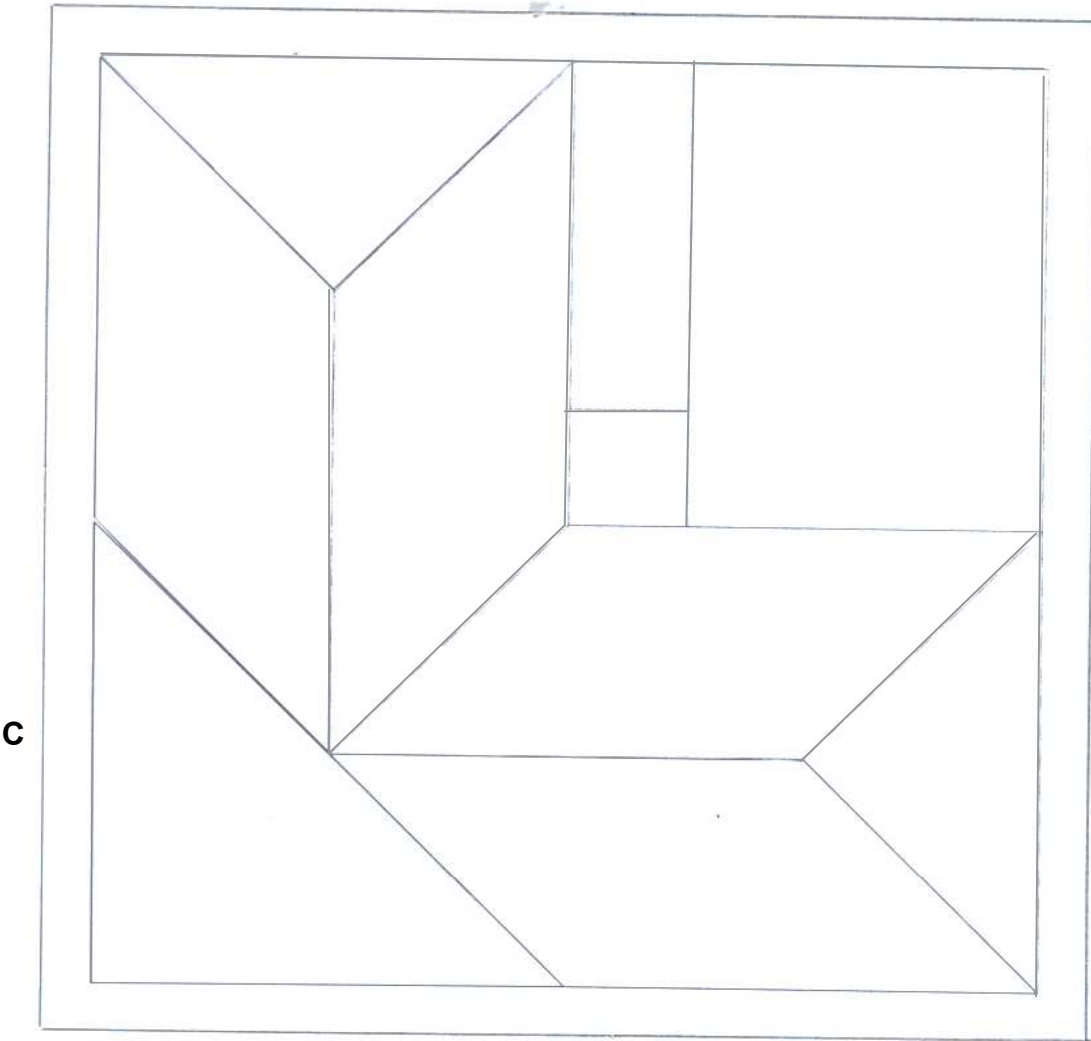


**Christmas tree**

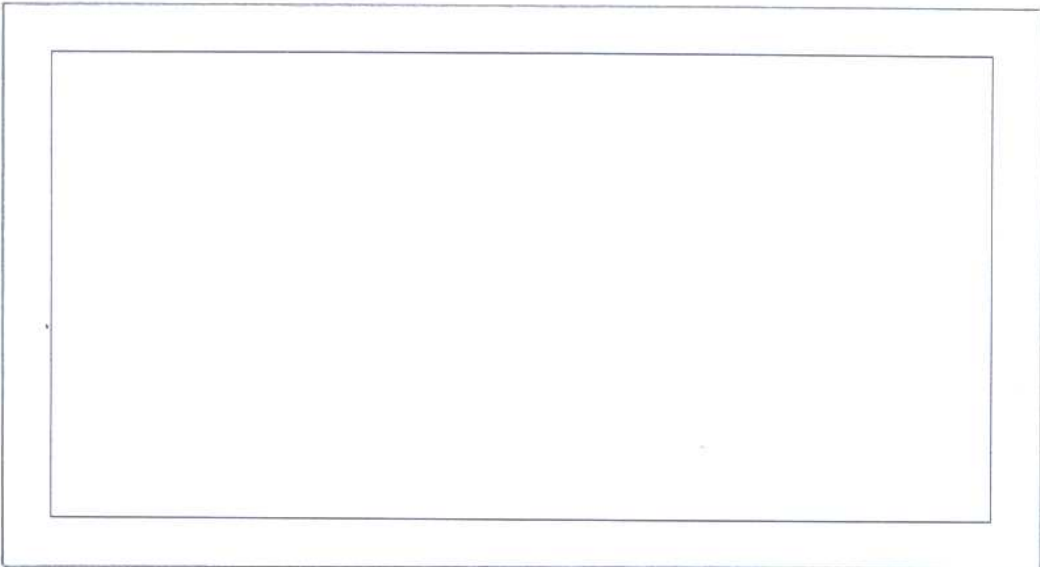
glue pattern on Christmas tree Nr. 2



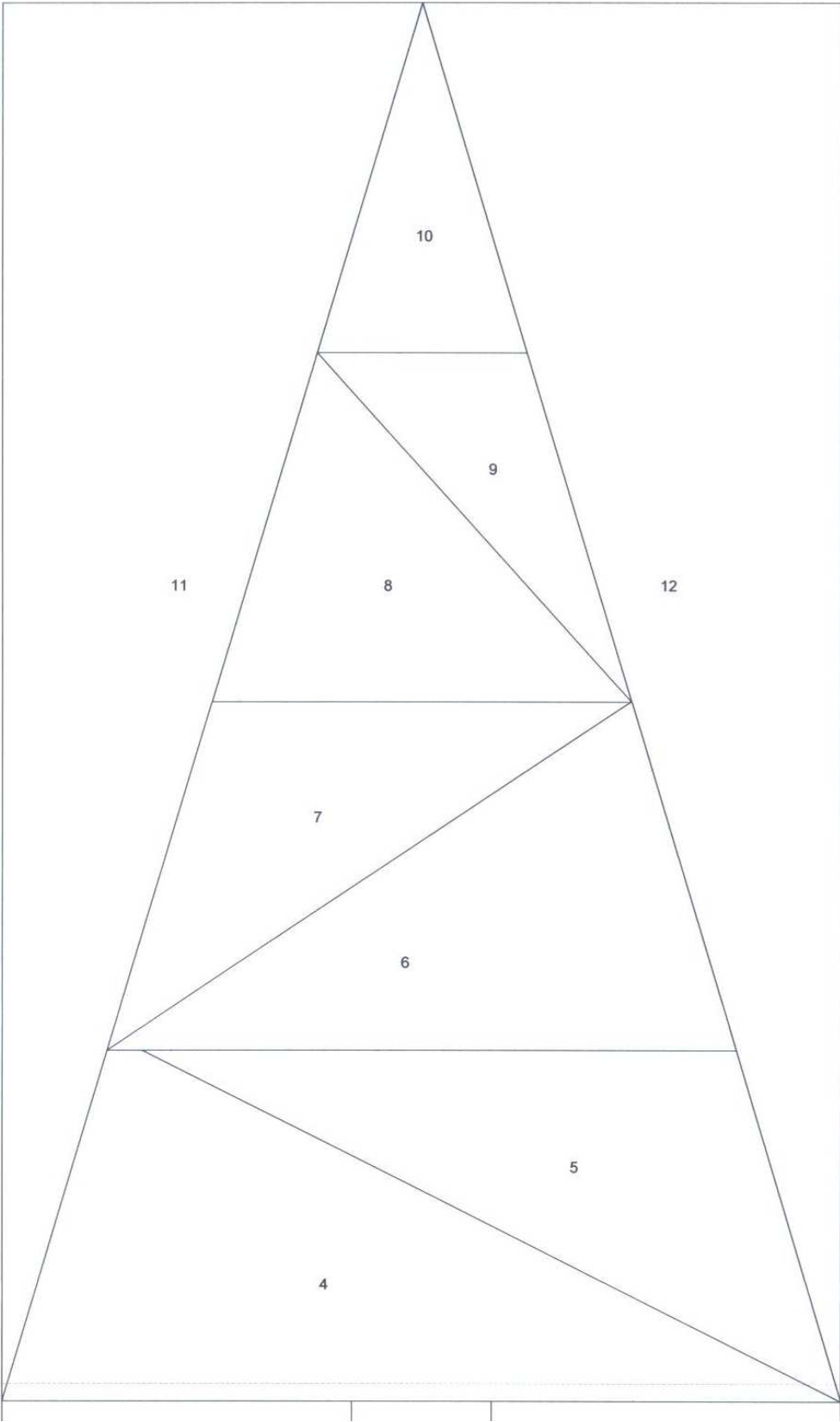
**Christmas star II**



**c**



# Christmas tree II



glue pattern on Christmas tree Nr. 1