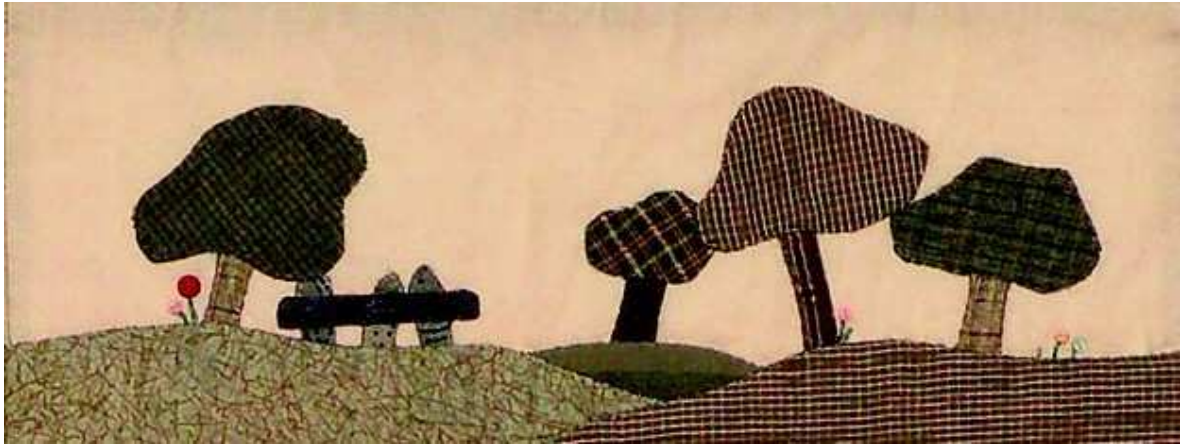


BOM 4



Grove

Size:

Block size completed	35 x 13 cm
Block size incl. seam allowance	36.5 x 14.5 cm

Cutting:

Cut out the background fabric a little larger than required by the needed block size. While applying, embroidering and ironing, the fabric may be deformed a little. Then it is easier to straighten the fabric afterwards. If you use an embroidery frame, the cut-out must be big enough to be put into the frame.

Draw the contours of the block on the cut-out with a water based marker. This helps with positioning the appliqué motifs.

Distribution of the fabrics:

Background	beige
Trees	green
Tree trunks and fence	dark brown
Landscape lines	different shades of green

Templates:

Put the two templates 4a and 4b together along the dotted line.

Completion:

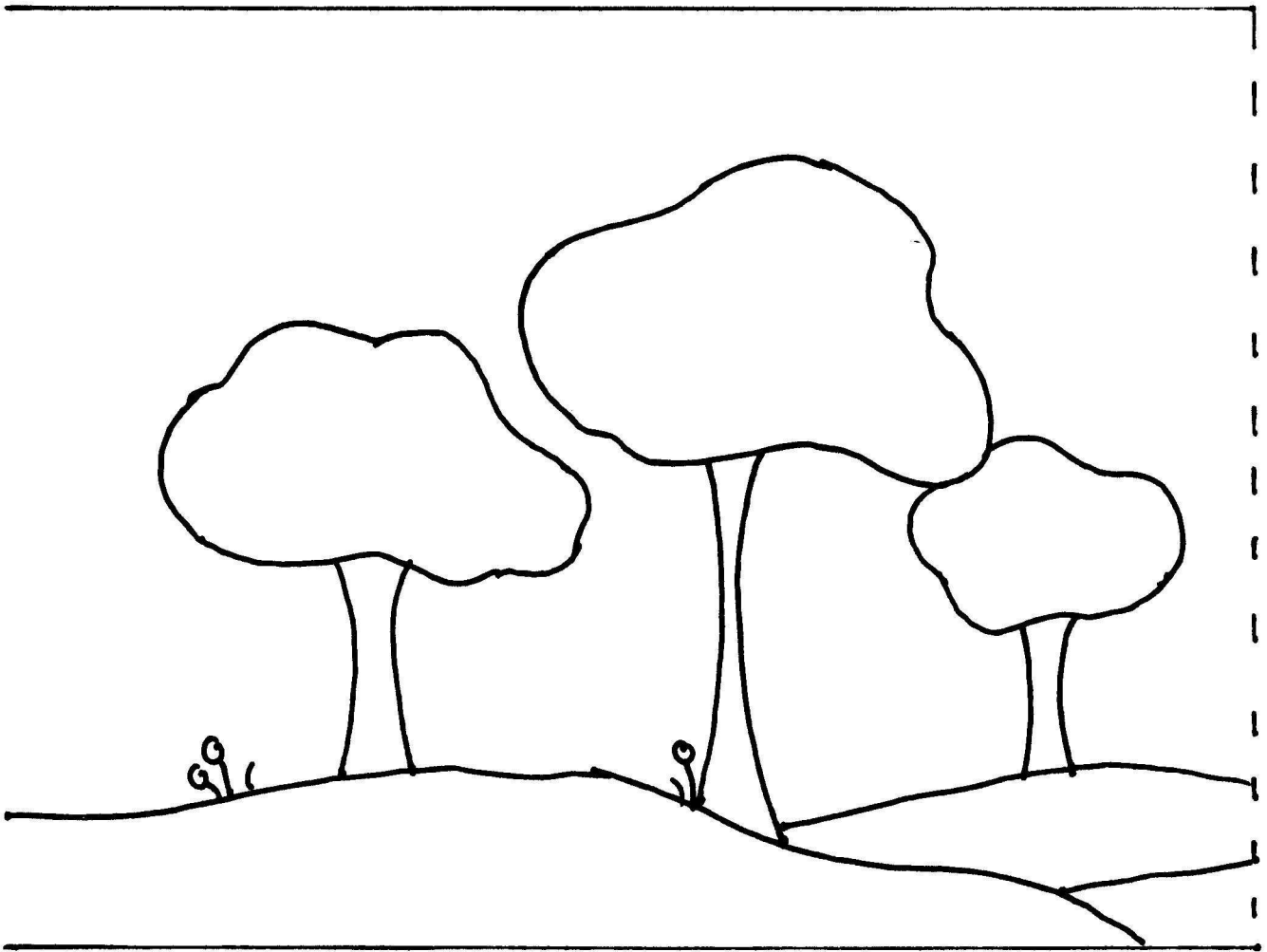
Choose the position of the trees and apply the motifs as described in the introduction, first the tree trunks and then the treetops. Afterwards apply the fence and then the landscape at the very end, in order to achieve a three-dimensional effect.

Embroidery:

Embroider the flower stems using **COTTON 12** in green with a stem stitch. Sew on buttons as blossoms and embroider a few blossoms with a French knot.

SULKY[®] KreativTeam

BOM 4a



BOM 4b

