

SULKY®

Raven all dressed up



Level of difficulty: ++

Levels of difficulty:

+ easy

++ medium

+++ advanced

© copyright Gunold GMBH

Supplies:

- 0.40 m **ULTRA STABLE** (roll width 50 cm)
- 1 small piece of **SOLVY** (for type A)
- **COTTON 30**
- **HOLOSHIMMER** in various colors
- 0.30 m black cotton fabric
- 1 small piece of linen or cotton fabric: solid (type A), patterned (type B)
- 1 spool of standard thread in suitable color
- 1 small piece of felt (4mm), e.g. grey, brown or cassis
- 1 package of fiber fill
- 2 black buttons (12 mm)
- Leftovers from black wool
- 1 freezer bag
- 1 package of bird sand

Product information:

Stabilizers

- **ULTRA STABLE**: a strong iron-on adhesive for permanent stability and form.
- **SOLVY**: a transparent stabilizer and transfer agent that dissolves in water after sewing.

Machine embroidery thread

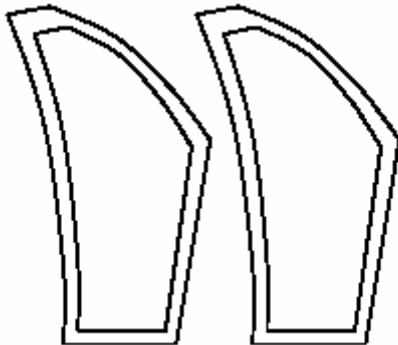
- **HOLOSHIMMER**: a machine embroidery yarn metallized with an aluminum holographic layer
- **COTTON 30**: a machine embroidery and quilt yarn made out of 100% cotton.

Size: approx. 35 cm (increase template by 141 %)

Construction

1. Preparation

- Trace the raven from the template onto the dull side of **ULTRA STABLE**.
- Cut out the **ULTRA STABLE** roughly around the pattern and iron it onto the black cotton fabric. Press 12-15 seconds all over.



- Cut out the bird pieces along the drawing line.
- Cut the bib from leftover **ULTRA STABLE** in the form of a triangle or square; the size is based on the size of the template.
- Iron **ULTRA STABLE** onto fabric type A or B.
- Cut out the beak from a small piece of felt.

2. Sewing

Bib out of solid fabric (type A)

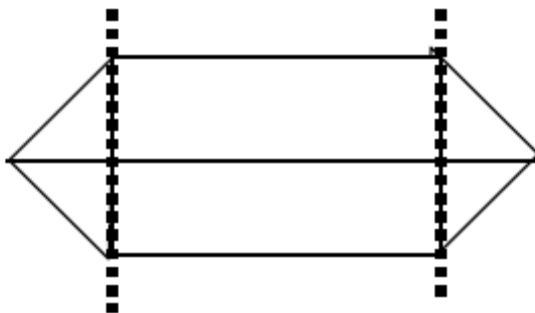
- Place the bib with the right side of the fabric facing you and arrange a quantity of **HOLOSHIMMER** on it in a pleasing pattern.
- Cover the **HOLOSHIMMER** with **SOLVY** and pin.
- Lower the feed dogs of your sewing machine. Use a topstitch-needle to sew with **HOLOSHIMMER** and reduce the sewing speed.
- Use **HOLOSHIMMER** as upper thread and **COTTON 30** for the bobbin thread in a suitable color. Free machine stitch all over the piece until all applied threads are fixed.
- Remove **SOLVY** carefully, trim the edge if necessary.

Bib out of patterned fabric (type B)

- Place the bib with the right side of the fabric facing you and sew all over using a straight stitch. Use **HOLOSHIMMER** in the upper thread and a suitable thread of **COTTON 30** in the bobbin.
- The bib is supposed to shimmer by using **HOLOSHIMMER**.

Sewing the raven

- Insert the felt beak 4-5 cm from the top on the front side of the raven. Edge-stitch the seam.
- Open the seam allowance below the beak and finger press.
- Place the bib 2.5 cm below the beak and sew it on with a straight or satin stitch.
- Close the seams on the back and the bottom; leave a hole open below the tail for turning the piece inside out.
- Arrange the bottom seam, the front and back seam on top of each other and edge-stitch like a bag.



Finishing the raven

- **Tip:** Use a hot iron, this will soften the sticky layer of **ULTRA STABLE** and the raven will be easier to turn.
- After turning the raven inside out, press the seams with the back of a pair of scissors.
- Place a freezer bag filled with bird sand in the bottom part of the raven.
- Stuff the remaining space with fiber fill.
- Close the last open seam by hand.
- For the head and tail feathers, wrap black wool around your finger, cut it open on one side and make a knot in the middle.
- Sew on the head and tail feathers next to the knot.
- Sew on buttons for the eyes.

Template Raven in festive robe

Seam allowance of 5 mm is included in the template!

Finished size: ca. 35 cm

Increase template from DIN A4 to DIN A3 (141%)

Finished size: ca. 45 cm

Divide the template in DIN A3 in half in the middle and increase again by 141%. Stick the pieces together.

Template Raven in festive robe

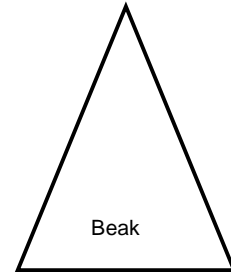
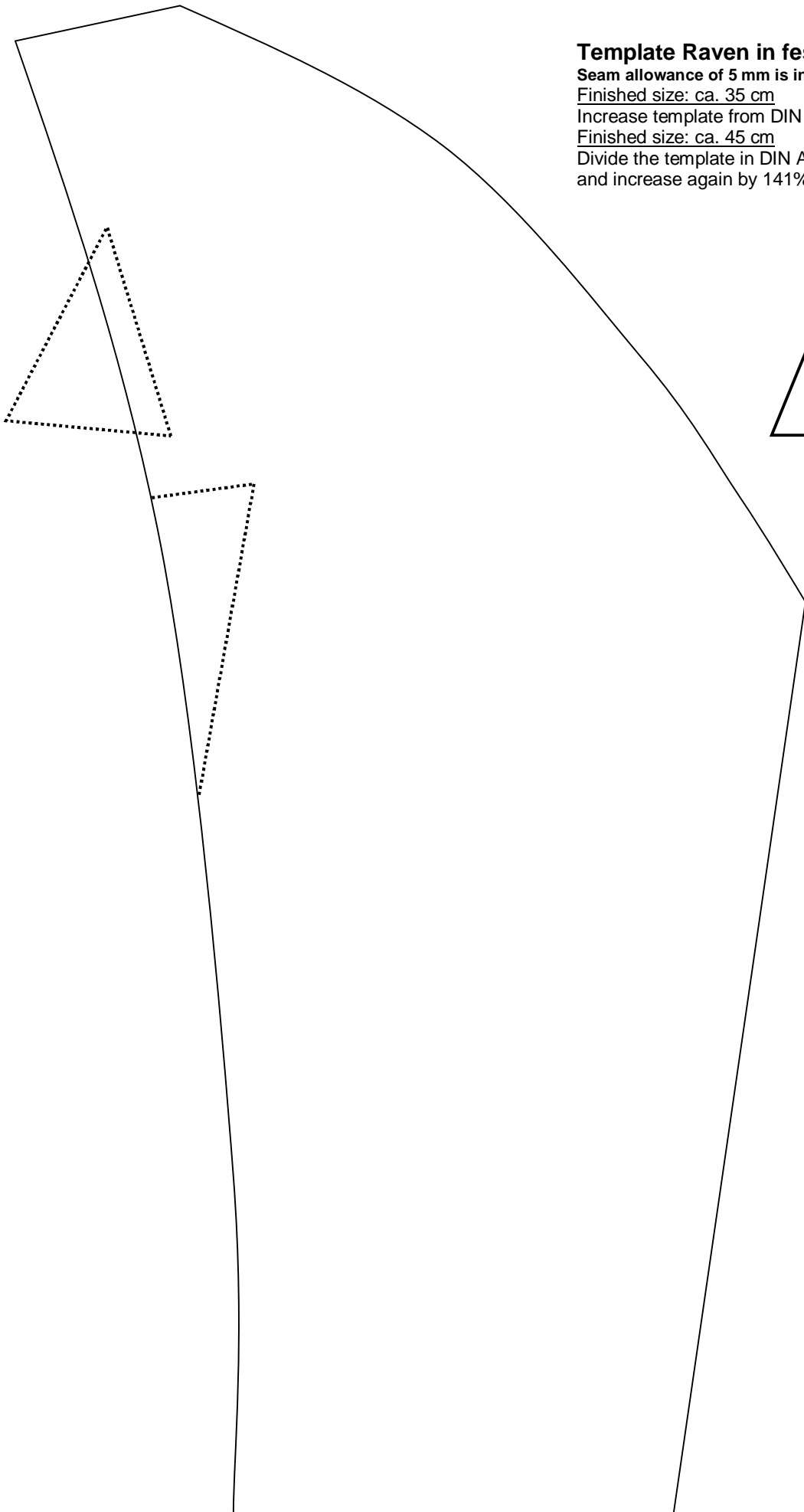
Seam allowance of 5 mm is included in the template!

Finished size: ca. 35 cm

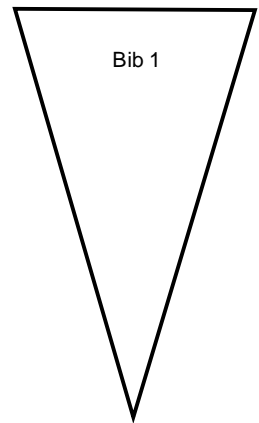
Increase template from DIN A4 to DIN A3 (141%)

Finished size: ca. 45 cm

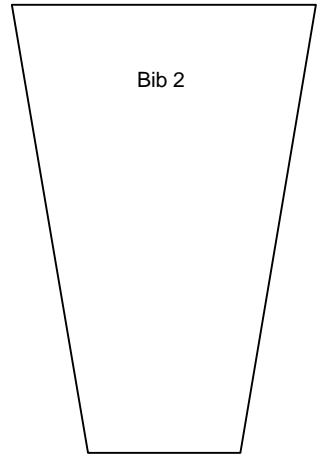
Divide the template in DIN A3 in half in the middle and increase again by 141%. Stick the pieces together.



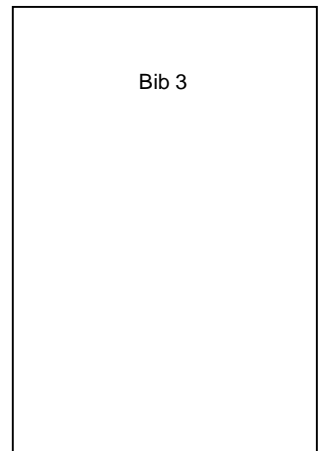
Beak



Bib 1



Bib 2



Bib 3